

Sierra Electric Cooperative, Inc.

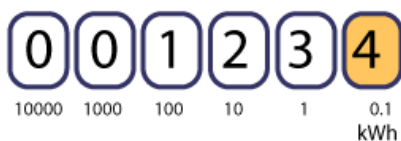
How to Read Your Meter

Your electric meter is a precise device that records the units of electricity (kilowatt hours) used in your home.

Sierra Electric currently uses two types of meters: Electromechanical and Digital.

A digital meter has an LED screen that displays the electricity use in an easy to read format.

Some electromechanical meters look like this:

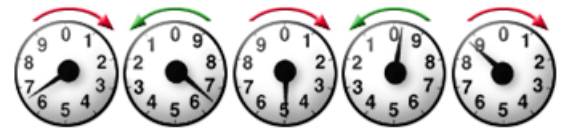


Electromechanical Meter

An electromechanical meter with dials can be more difficult to read. Follow these instructions to read an electromechanical meter with dials:

When recording a reading for an electric meter, start with the dial farthest to the right. If the dial hand (pointer) is between two numbers on the dial, record the smaller number. Then, record the dial to the left of it. Continue recording the numbers of the dials from right to left. Although some meters only have four dials, the concept is the same.

When a dial pointer makes a complete revolution, it moves from zero through nine and back to zero. Once it returns to zero, it has made one complete revolution. This causes the pointer on the dial to the left to move to the next higher number. Each dial affects the dial to the left of it. For this reason, the numbers are recorded from the right dial to the left dial, beginning with the dial on the farthest right. The example below shows reading: 66498.



The basic rules of reading a meter are:

1. Always record the dial numbers of a meter beginning with the far right dial, moving next to the dial on the left.
2. If a dial's pointer is between two numbers, record the smaller number.
3. Always record one less than the pointer indicates if the pointer on the dial to the right is not past the zero.

The third rule is the most difficult. It applies to whenever a dial's pointer appears to be pointing directly to a number on the dial. Whenever this situation occurs, you must check the dial to the right. If that dial's reading was an 8 or 9, that means the pointer hasn't made a complete revolution. Therefore, on the dial you are recording, the pointer hasn't quite moved to the number at which it appears to be pointing. If this is the case, then always record one number less than the pointer indicates.

You can't receive an accurate bill if your meter can't be read. Please be considerate and provide safe, unobstructed access to the meter. If you have anything that might pose a problem to reading your meter accurately, please contact us at 575-744-5231 so we can make arrangements for reading your meter.