

A close-up photograph of a person's hands weaving on a traditional loom. The loom is filled with numerous vertical threads of various colors, including shades of blue, green, and pink. The person's hands are positioned to manipulate the threads, creating a textured fabric. The background is slightly blurred, showing more of the loom and the surrounding environment.

enchantment

The Voice of New Mexico's Rural Electric Cooperatives

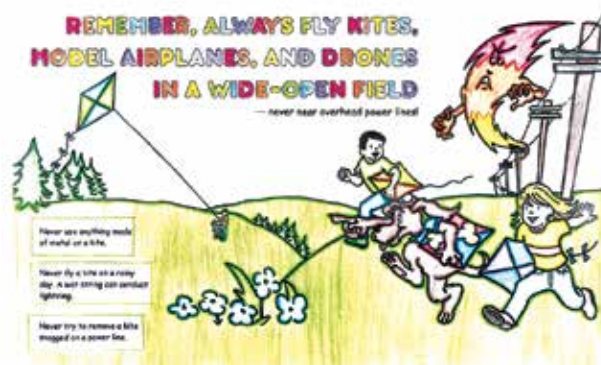
The Heart of Weaving

June 2018

Safety Coloring Poster Contest

The annual Safety Coloring Poster Contest is held each year to promote electrical safety and awareness to New Mexico youth. Sierra Electric joins other state cooperatives in sponsoring the contest for 2nd, 3rd and 4th grade students. This year, 138 students in Sierra County participated.

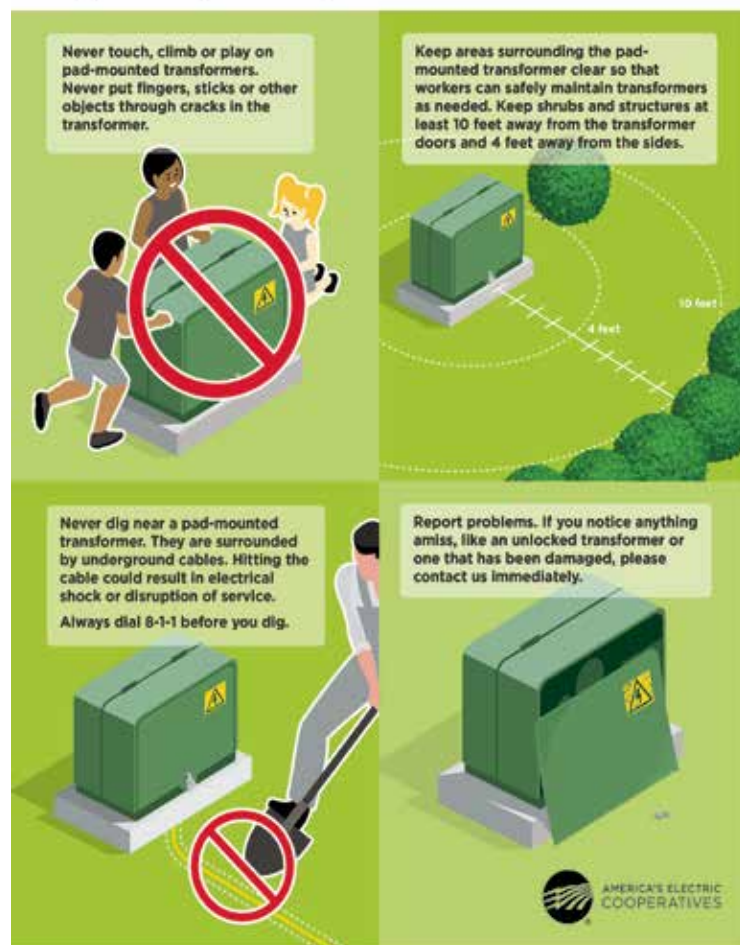
Sierra Electric recently visited the schools and awarded students who colored the winning posters with personalized book bags, ribbons and gift cards. Electrical safety education is important to Sierra Electric and we always appreciate the involvement and participation of our local students and teachers.



Sierra Electric overall winning poster colored by Anya Baray.

Avoid the Big Green Box

Please stay away from pad-mounted transformers (the big green box). While safe, they are not meant for touching, climbing or playing. Pad-mounted transformers carry high voltages of electricity that serve many homes in our communities.



Beat the Peak

As warmer weather sets in, our thoughts on keeping the house comfortable switch from heating to cooling. But as temperatures rise and air conditioners are switched on, looking for ways to improve energy efficiency at home can help you and Sierra Electric Cooperative reduce demand, saving energy and money.

Making small adjustments in when, where and how you use electricity won't only help control your energy costs, but it can also help keep temperatures in your home more pleasant on sultry days.

Housework hiatus

Avoiding peak energy costs is a good reason to put some chores on hold, at least until power demand dips. Consider some of the jobs one kilowatt hour (kwh) of electricity can do before you use it:

- Wash three loads of laundry
- Complete one dryer cycle
- Vacuum rugs in two average homes
- Iron five shirts
- Run three cycles in a loaded dishwasher

All of these activities can be done outside of peak demand periods, also known as peak hours.

Sierra Electric Education Foundation Scholarships Awarded

The Sierra Electric Cooperative Education Foundation was formed in 1990 by the Board of Trustees to benefit our members in our community. The Education Foundation is funded by unclaimed patronage capital credits, Operation Round Up participation and private donations. The first scholarship was awarded in the amount of \$250 in 1991. Sierra Electric is proud to announce the Education Foundation is awarding thirteen scholarships in the amount of \$1,400 for the 2018-2019 college semesters to the following students:

Katelyn Apodaca
 Brook Berlier
 Dakota Cano-Linson
 Eleanor Cano-Linson
 Logan Cummins
 Kaitlin Fancher
 Dylan Garay

Jared Garay
 David Gurule
 Christian Hopkins
 William "Kade" Hopkins
 McKensi Spears
 John "Anthony" Wasilowski, V

In addition to the Education Foundation scholarships, Sierra Electric receives a \$1,000 scholarship from the Basin Electric Power Cooperative and two \$500 scholarships from Tri-State G & T. The Basin scholarship has been awarded to Lorraina Rojas and the Tri-State scholarships have been awarded to Veronica Melendez and Shane Holman.

Since 1990, Sierra Electric and its partners have awarded \$139,400 in scholarship awards. Robert Aragon, a four-time Sierra Education Foundation scholarship recipient, is graduating from New Mexico State University. We are proud to have been able to provide this scholarship program to help our local members and their dependents complete their college educations. We wish Robert and all our recipients the best of luck in their future college and career goals!

Board of Trustees

John Bokich	President	Elephant Butte	District 2
Thomas Stroup	Vice President	Elephant Butte	District 2
Charles McMath	Secretary	Elephant Butte	District 2
George Biel	Treasurer	Monticello	District 3
Dennis Franklin	Trustee	Williamsburg	District 1
Tami Garrett	Trustee	Las Palomas	District 3
Judy Smith	Trustee	Caballo	District 1
Darryl Sullivan	Trustee	Monticello	District 3
Oscar Lee Wood	Trustee	Elephant Butte	District 2

Board Meeting

The board of trustees meets the third Friday of the month at 8:30 a.m. in the cooperative boardroom.



A Touchstone Energy® Cooperative

SIERRA ELECTRIC COOPERATIVE, INC.

Office Address

610 Highway 195
 Post Office Box 290
 Elephant Butte, NM 87935

Telephone

575-744-5231

Outage

888-336-3380

Fax

575-744-5819

Email Address

sierra@secpower.com

Website Address

www.sierraelectric.org

Office Hours

8:00 a.m. – 5:00 p.m. (M-F)

Denise Barrera

General Manager